

SPECIAL APPLICATION SERIES SA4 EXTERNAL POSITION INDICATOR CHECK VALVE ACCESSORY



OVERVIEW

The Bray Series SA4 check valve accessory is designed to indicate degree of open/close in applications requiring visual indication of disc position.

SPECIFICATIONS

Size Range	NPS 2" to 60" 50mm to 1500mm
Temperature Range	Pending Model Selected
Operating Pressure	Pending Model Selected
Body Style	One-Piece Flanged or Wafer Body
Compatibility	Bray 205, 210, or 211 Series
Leakage Rate	API 598

APPLICATIONS

- > Water
- > Disc Position Indicators

MEDIA

- > Dry Chlorine (Gas or Liquid)
- > Gases
- > Hydrogen
- > Oxygen
- > Water

DESIGN FEATURES

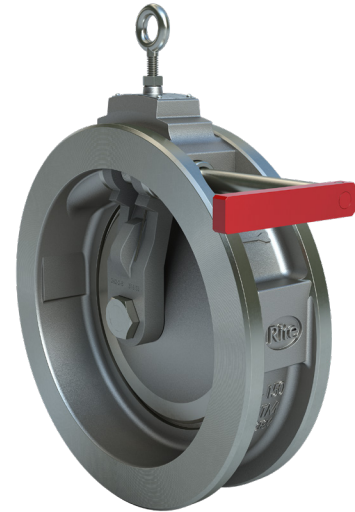
The Bray Series SA4 check valve accessory offers single door check valve design modification to alter flow conditions:

APPLICATION:

The purpose of equipping a standard Bray/Rite Single Door Wafer or Flanged Type Swing Check Valve with an external position indicator, is to provide a visual indication of the internal disc position.

GENERAL DESCRIPTION:

A Model SA4 is a basic Bray/Rite Single Door Wafer or Flanged Type Swing Check Valve which has been converted, featuring a positive drive at the Disc/Hinge/ Shaft mounting. The basic valve has a Hinge-Disc assembly connected to a positive hexagonal drive Shaft, which extends through the Body. The Shaft is supported by the Body at one end, by a Seal Bushing in the Body. Four O-Rings seal the Shaft and the Body. The Disc is supplied with a non-rotating feature to prevent it from "Spinning" and creating excessive wear at the Disc/Hinge connection.



**SPECIAL APPLICATION SERIES SA4
EXTERNAL POSITION INDICATOR
CHECK VALVE ACCESSORY**



MATERIAL OPTIONS¹

Body	ASTM A216-WCB*
Hinge	ASTM A351-CF8M
Seat (optional)	ASTM A240-304
Spring	ASTM A313-316
Spacer	ASTM A479-316
Shaft	ASTM A479-316
Plug	Steel (or as per body)
Lock Nut	Steel Zinc Plated
Eye Bolt	Steel Zinc Plated
Name Plate	SS316
Disc	ASTM A351-CF8M
Rivet	Steel Zinc Plated
O-Ring (optional)	Buna / EPDM / Teflon / TES / Viton
Disc Nut	Stainless Steel
Seal Bushing	ASTM A479-316
O-Ring	Buna / EPDM / Teflon / TES / Viton
O-Ring	Buna / EPDM / Teflon / TES / Viton
Indicator	Aluminum
Pin	Steel

Note: ¹Materials available in ASME and EN grades.
*Other body materials available: A395, A351-CF8M, Monel, Alloy 20, Hastelloy, 254SMO, Titanium.
Integral seat offered for Stainless Steel valves.
All external components can be offered in SS where required.
* Previous Models before July 2024 may have included slightly different material configurations/parts callout lists.