

SPECIAL APPLICATION SERIES SA4A BACKFLUSH LEVER CHECK VALVE ACCESSORY



OVERVIEW

The Bray Series SA4A check valve accessory is designed to allow manual operation in applications requiring backflush process.

SPECIFICATIONS

Size Range	NPS 2" to 12" 50mm to 300mm
Temperature Range	Pending Model Selected
Operating Pressure	Pending Model Selected
Body Style	One-Piece Flanged or Wafer Body
Compatibility	Bray 205, 210, or 211 Series
Leakage Rate	API 598

APPLICATIONS

- > Backflushing Pipelines
- > Power Generation

MEDIA

- > Dry Chlorine (Gas or Liquid)
- > Gases
- > Hydrogen
- > Oxygen
- > Water

DESIGN FEATURES

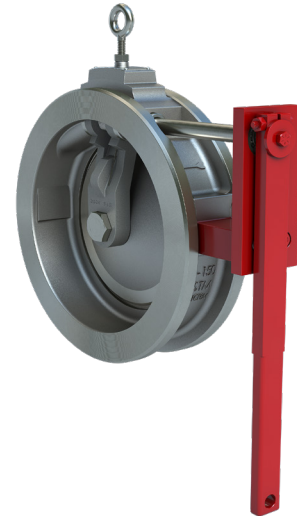
The Bray Series SA4A check valve accessory offers single door check valve design modification to alter flow conditions:

APPLICATION:

The purpose of equipping a standard Bray/Rite Single Door Wafer or Flanged Type Swing Check Valve with a Backflush Lever is to allow the user to open the valve manually to backflush a pipeline.

GENERAL DESCRIPTION:

The Model SA4A is a standard Bray/Rite Single Door Wafer or Flanged Type Swing Check Valve that has been modified to allow the user to open the valve manually via lever to backflush a pipeline, featuring a positive hexagonal drive at the Disc/Hinge/Shaft connection. The basic valve has a Disc/Hinge assembly connected to a positive hexagonal drive Shaft, which extends through the Body. The Shaft is supported by the Body at one end, by a Seal Bushing in the Body and by a Ball Bearing in the Bracket. Four O-Rings seal the Shaft and the Body. Ball Bearing are used in the Bracket to provide support and to reduce friction. The Lever is mounted onto the Shaft with a hexagon connection.



**SPECIAL APPLICATION SERIES SA4A
BACKFLUSH LEVER
CHECK VALVE ACCESSORY**



MATERIAL OPTIONS¹

Body	ASTM A216-WCB*
Hinge	ASTM A351-CF8M
Seat (optional)	ASTM A240-304
Spring	ASTM A313-316
Spacer	ASTM A479-316
Shaft	F316 under 4", and ASTM A564-630 (17-4 PH) above 4"
Plug	Steel (or as per body)
Lock Nut	Steel Zinc Plated
Eye Bolt	Steel Zinc Plated
Name Plate	SS316
Disc	ASTM A351-CF8M
Rivet	Steel Zinc Plated
O-Ring (optional)	Buna / EPDM / Teflon / TES / Viton
Disc Nut	Stainless Steel
Seal Bushing	ASTM A479-316
O-Ring	Buna / EPDM / Teflon / TES / Viton
O-Ring	Buna / EPDM / Teflon / TES / Viton

Lever	Steel
Retaining Plate	Steel
Socket Head Screw	Steel Zinc Plated
Bracket	Steel
Socket Head Screw	Steel Zinc Plated
Dowel Pin	Steel Zinc Plated
Ball Bearing	Steel
Rd. Hd. Screw	Steel Zinc Plated
Hex Bolt	Steel
Hex Nut	Steel

Note: ¹ Materials available in ASME and EN grades.
 *Other body materials available: A395, A351-CF8M, Monel, Alloy 20, Hastelloy, 254SMO, Titanium.
 Integral seat offered for Stainless Steel valves.
 All external components can be offered in SS where required.
 * Previous Models before July 2024 may have included slightly different material configurations/parts callout lists.