

OVERVIEW

Series 98C actuators are designed for pneumatic operation to a maximum pressure of 150 psi (10.3 Bar) and temperature ranges of -50°F to 300°F (-46°C to 149°C).

Hundreds of possible configurations meet a variety of application requirements making it suitable for various valve types and operational needs.

The non-pressurized central body minimizes air consumption by using all instrumentation air to power the actuator, rather than filling the empty void of the torque housing. By reducing the number of pressure seals creates a more robust and reliable actuator design, reducing potential for unintended air leak paths.

This compact scotch yoke actuator has been tested to withstand up to 1,000,000 cycles ensuring long-term performance and reliability.

- > Compact design offers a high torque-to-weight ratio
- > Torque output ranging up to 17,701 lb-in (2,000 Nm)
- > Spring end torque ranging up to 6,325 lb-in (715 Nm)
- > Premium epoxy/polyurethane coating as standard
- > Available power options include pneumatic, hydraulic or electro-hydraulic.

INDUSTRIES

- > Industrial Gas
- > Chemical & Petrochemical
- > Food & Beverage
- > Data Center
- > HVAC
- > Marine & Shipbuilding
- > Mining & Metals
- > Oil & Gas
- > Pharma & Biotech
- > Power/FGD
- > Pulp & Paper
- > Water & Wastewater

APPLICATIONS

- > Open / Close
- > On / Off
- > Modulating
- > Emergency Shutdown
- > Blowdown



COMPLIANCES

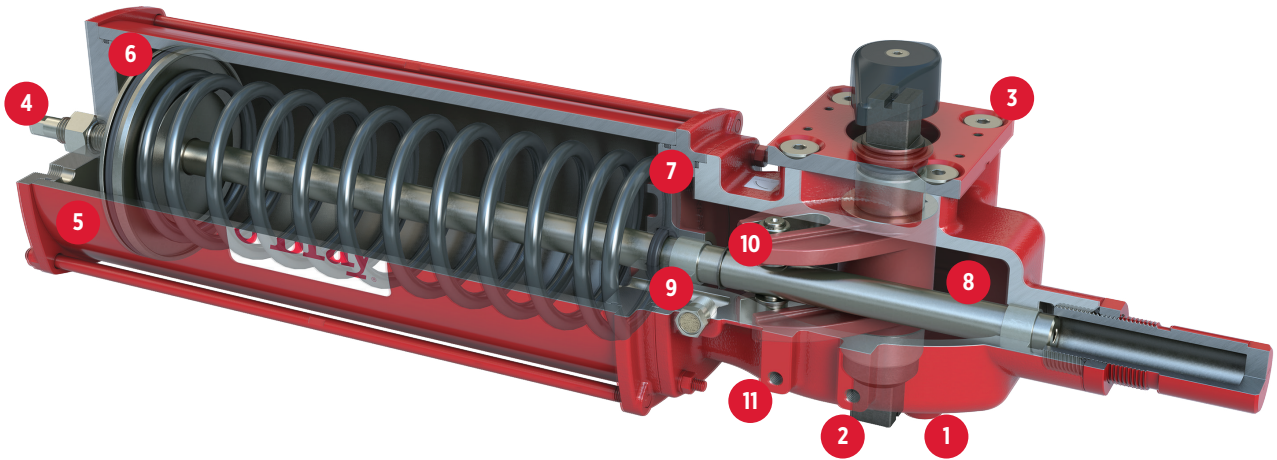
Torque Base	Mounting Dimensions as per ISO 5211: 2001(E)
Accessories	Shaft Driven Accessories mounting per NAMUR-VDE
Performance Testing	EN 15714-3:2022
Ingress Protection	IP66/IP67M per IEC 60529
Safety	ATEX, SIL 3 suitable, PED on request

SPECIFICATIONS

Media	Dry Compressed Air/Inert Gas/Natural Gas
Pressure Range	40 - 150 psi (2.8 - 10.3 bar)
Temperature Range Options	Standard: -20°F to 200°F (-29°C to 93°C) High Temperature: Up to 300°F (149°C) Low Temperature: Down to -50°F (-46°C)

Contact factory for other media or non-standard temperature range.

FEATURES & BENEFITS



- 1 ISO 5211 Valve Mounting:** Two bolting surfaces for rapid integration in either Fail CW or CCW valve operation.
- 2 Dual Male Square Drive Stems:** Provides easy integration with various valve types ensuring compatibility and reducing installation complexity.
- 3 Standard NAMUR 3845 Interface:** Attached to the actuator ISO 5211 interface, easily convertible to support either Fail CW or Fail CCW configurations
- 4 Blowout-proof Travel Stop**
- 5 Honed and Hard Chrome Plated Cylinder Barrel:** Improves actuator efficiency by reducing friction while providing superior corrosion resistance.
- 6 Quad Seal Rings:** Ensure long-term sealing reliability, reducing maintenance requirements and extending the product's lifecycle
- 7 Pressure Seals:** Reduced number of pressure seals contributes to a more robust and reliable actuator design, reducing potential for unintended air leak paths.
- 8 Hard Chrome Plated Piston Rod**
- 9 Self-lubricating PTFE bushings:** Supports the torque shaft and piston rod offering extended life and secure alignment
- 10 Dry Film Lubricated Roller Bearings**
- 11 Dual Accessory Mounting Pads:** For attaching actuator accessories and controls

ACCESSORIES

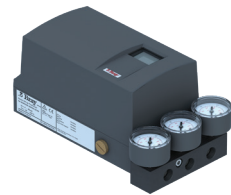
Add to the versatility of the S98 by choosing the applicable accessories from Bray's complete line of positioners, status monitors and solenoids. The combination of actuators and accessories offer the best compatibility, economy and quality performance in the flow control industry.



VALVE STATUS MONITORS
Series 5A | 5B | 5C



PROXIMITY SENSORS
Series 54



POSITIONER
Series 6A